

Civil

H125[®]



AIRBUS
HELICOPTERS

MAKING THE BEST EVEN BETTER!



The H125® is the high-performance version of the single engine Ecureuil® family. It demonstrated its tremendous capabilities while breaking the World Record for the highest altitude landing and takeoff: Mount Everest (29,029 ft / 8,848 m).

The H125 outclasses all other single engine helicopters for performance, versatility, maintenance costs, safety and low acquisition. It excels in hot & high and extreme environments.

The H125 is equipped with a Turbomeca Arriel 2D engine including an upgraded triple engine control: dual channel FADEC (Full Authority Digital Engine Control) unit plus a third independent & automatic back up channel for automatic start-up sequences and care-free engine handling.

This modern engine has an increased reliability and decreased maintenance costs and is fitted with an Engine Data Recorder.

The H125 glass cockpit is equipped with modern radio line installed around Garmin GTN650H. The H125 is now at the level of most modern aircraft and offers reduced pilot workload and improved mission avionics features. For optimizing the Man-Machine Interface, the H125 is basically fitted with the Vehicle & Engine Multifunction Display (VEMD®) that allows the pilot to see all the main vehicle and engine parameters at one glance on a friendly dual LCD screen.

The H125 offers a new elegant cabin, increasing passenger comfort.

Thanks to its versatile flat floored cabin, the H125 can be quickly and easily reconfigured for all types of missions, such as aerial work, firefighting, law enforcement, Search And Rescue or passenger transport. The H125 offers a new interior design-STYLENCE®- for increasing comfort in passenger transport missions.



Aerial Work

The powerful H125 is reliable, comfortable, safe and cost-effective.

The H125 can be configured, and easily reconfigured, with a long list of certified optional equipment for whatever aerial work mission you may have. With its lifting power capacity, endurance and manoeuvrability, the H125 is always up for the most rigorous high and hot missions and sling work (cargo-swing load capacity: 1,400kg / 3,086 lb).





Ready for any mission

The new powerful Arriel 2D engine offers state-of-the-art technology for outstanding reliability, simplified maintenance and low operating costs.

A wide range of optional equipment

Second battery kit, sand prevention filter, sliding doors, tail rotor arch, cabin floor window, etc.



Hoisting

Mission Capabilities:

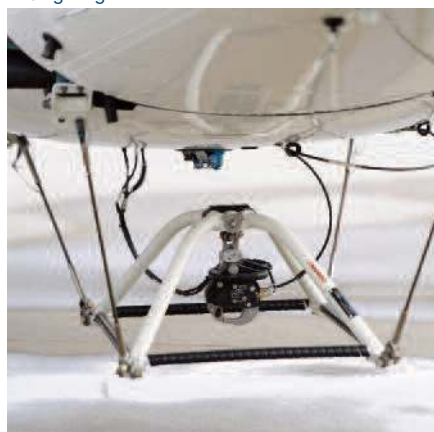
- Air crane operations
- Fire fighting
- Hoisting
- Power line inspection
- Crop spraying
- News gathering
- Parachute drops
- Geological survey



Fire fighting



Air crane operations



Swing load



Electrical external mirror



Broadcasting

Law Enforcement

The H125 is well adapted to multi-role law enforcement missions: surveillance, command and control, search and rescue, SWAT unit transportation or hoisting of canine units, as well as flying border patrol in high and hot conditions. The H125 offers excellent visibility, a pilot-friendly ergonomic cockpit and exceptional endurance and speed. The unobstructed flat floor cabin concept and low vibration level allow for the installation of all necessary equipment, including fully integrated law enforcement instrument panels, infrared cameras and tactical consoles.





Air Support



Search Light



FLIR

Eyes in the Sky

The H125 features the latest technologies and can also be equipped with a wide range of certified optional law enforcement equipment.

Police forces in some 30 regions across the world already operate aircraft from the H125 family.

The H125 is capable of high-speed pursuits and offers excellent manoeuvrability. Thanks to its FADEC-equipped engine, starting the H125 is automatic and very simple. Its modular design makes it easy to maintain, increasing its availability rate. The H125 offers day and night VFR flight capability and can be customised with NVG-compatible lighting sources and instruments.

A wide range of optional equipment and capabilities are available:

Infrared thermal imaging system (both modes can be recorded or transmitted via microwave downlink), moving map with zoom and GPS, tracker for following or locating stolen property or vehicles, wire-strike protection system, gyro-stabilised binoculars, simultaneous 4- channel police radio.



Emergency Medical Service kit



Integrated Hailers



Sliding doors

Passenger Transportation

The H125 provides passengers with the highest level of comfort and elegance in its roomy and air-conditioned cabin. The H125 offers a low vibration level and great comfort for passengers. With its easy cabin access through two large sliding doors, forward-facing seats and large baggage compartments, the H125 is the ultimate single engine helicopter for the most demanding business aviation customers all over the world.





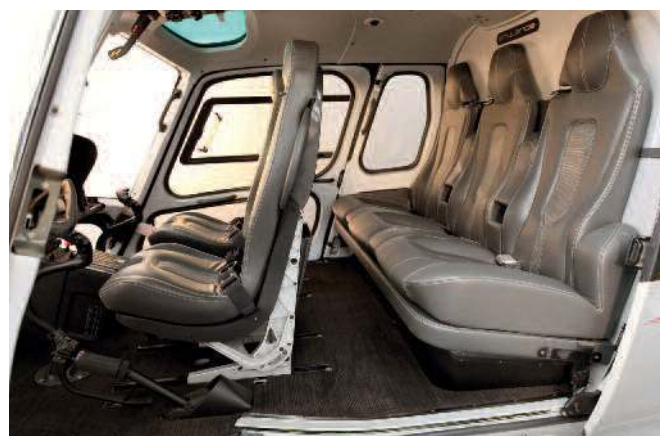
New Interior Design

Thanks to its wide and unobstructed cabin, high cruising speed, range and payload, the H125 can carry more passengers on more round-trips per day than any other helicopter in its class.

The interior and its seats have been redesigned to provide the most comfortable and stylish accommodations for your flight.

Various seating layouts:

- Standard configuration: 5 passengers + 1 pilot.
- High density configuration: 6 passengers + 1 pilot.
- In its STYLENCE® configuration (4 passengers + 1 pilot), the H125 offers all the amenities of a small executive jet with the added value of being able to land everywhere. The new STYLENCE® package offers a refined cabin finishing and comes in 6 different styles (6 colors: Silk, Terra, Flame, Cobalt, Shadow and Titanium).



Carbon

Leather

Carpet



HCare Service Offer

To contribute to helicopters' availability optimization, Airbus Helicopters puts at operators' disposal a robust worldwide-spread support and a wide choice of services that have been elaborated according to Customers operational return of experience from the field.



Airbus Helicopters is always seeking for better efficiency, and has made the choice to be present in every areas of the globe, with regional organization and industrial means, at the closest from operations.

To better answer the various mission needs we first have set-up a comprehensive material management offer:

- **HCare Easy:** On-catalogue services
- **HCare Smart:** Contractual By-the-Hour programs
- **HCare Infinite:** Complete support solutions

Within this offer, we have fine-tuned services to make them more suitable to H125.

Easy Repair & Easy Exchange ensure secured delivery dates and enhanced parts availability for a defined list of items, and give the flexibility of a by-event payment.

Smart PBH service, steps further in both parts availability and budget control by offering contractual and committed delivery times and hourly rate. Attractive conditions are proposed to increase competitiveness of such program, and allow operators to easily access the plan without immediate financial implication.

Our global distribution network, composed of Logistics platforms, regional and local inventories, ensures efficient and cost-effective deliveries anywhere, anytime.

Our Customer Centers manage customer relation on a daily basis, and answer to any operators' request to make sure you will get full benefit from your helicopters.



They are equipped with latest generation installations, experienced and trained technician teams, capable to offer local helicopter maintenance solutions either in our workshops, or at your premises.

Our team of more than 150 qualified Tech-Reps provides on-site Technical Assistance, and perform On-the-Job Training to operators' technicians for first-class maintenance operations.

Airbus Helicopters Technical Expertise organization answers to all technical requests, and support you with a 24/7 service around the clock. To optimize flight and maintenance operations, we offer local Training Centers with state-of-the-art means such as Full Flight Simulators (FFS) or Flight Navigation Procedure Trainers (FNPT), and full-scale mock-ups for technicians.



To optimize flight and maintenance operations, we offer local Training Centers with state-of-the-art means such as Full Flight Simulators (FFS) or Flight Navigation Procedure Trainers (FNPT), and full-scale mock-ups for technicians.

Pilots' proficiency can be enhanced within your flight environment thanks to pilots' accompaniment and mission operational courses performed on-site.

Airbus Helicopters through its Connected Services opens a new way of interacting with its customers. Such solutions pave the way to faster and easier data exchange between the helicopter manufacturer and operators. This exchange highly contributes to continuously improves the support and performance of your helicopters.



We propose two suites of services:

- **HCare Flight:** support of Flight Operations
- **HCare Fleet:** support of Maintenance Operations

Whatever the time and wherever you are, access all services online just a click away.

Technology

The H125 cockpit is fitted with a glass cockpit includes Vehicle and Engine Multifunction Display (VEMD), and new dual-channel Full Authority Digital Engine Control (FADEC).

The use of composite material for the airframe, rotors and main rotor head gives the H125 the best protection against corrosion and, consequently, reduces your maintenance costs.



A State-of-the-art Workhorse



New Turbomeca Arriel 2D engine: High performance, Reliable and Low Maintenance Cost

- The legendary reliability of the Arriel: the Arriel family has over 37 million flight hours of experience
- Modular design
- New dual-channel Full Authority Digital Engine Control (FADEC) generation is backed-up with one independent control system to enhance safety and cancels pilots' training for manual engine regulation. It also ensures engine monitoring, providing it with the correct fuel, air and ignition ratios required for optimum performance with minimum fuel expenditure to suit any given exterior condition.
- Engine Data Recorder: it manages cycle countings for more anticipated maintenance.
- Time Between Overhaul (TBO): Engine TBO and maintenance inspection intervals 4,000h (extension target value: 6,000h).

New safety devices

- Vision 1000 : low cost image & cockpit recorder + basic HFDM
- Same fuel tank as H130 is proposed as option aiming at significantly improve safety



Vision 1000

Low cost image & cockpit recorder + basic HFDM



VEMD display on ground

Vehicle and Engine Multifunction Display

The VEMD is a modern, fully duplex equipment for the management and control of the main vehicle and engine parameters. It provides several display modes: operational (mission and performance calculation, automatic engine power check) and maintenance mode (flight report, failure and over limit detection).

The VEMD considerably reduces the flight crew's workload and improves safety, as the pilot can see all the parameters at a glance, including First Limit Indicator (FLI) and concentrate solely on his mission.



VEMD display in flight

Modern radio line installed around the Garmin GTN650H



Leader in its class

Characteristics

The powerful, high-performance H125 is designed to carry out the most demanding missions in the most extreme weather and geographical conditions. Its exceptional lifting capability, high endurance, extended range and fast cruise speed make the H125 the leader in its class.

Another world record

An H125 climbed to 3,000 meters / 9,900 ft in 2 minutes 21 seconds.

CAPACITY			
Configuration	Pilot		Passenger
High density version	1		6
Standard version	1		5
Comfort version	1		4 / 5
AIR MEDICAL TRANSPORTATION			
Configuration	Pilot	Doctor	Stretcher
Casualty evacuation	1	2	1
LOAD TRANSPORTATION			
Configuration	Pilot		Load in cabin
Cargo carrying	1		105.9 ft³ (3m³)
WEIGHT			
Maximum takeoff weight	2,250 kg		4,960 lb
With the optional “ kit to increase Internal Gross Weight”	2,370 kg		5,225 lb
Maximum takeoff weight with external load	2,800 kg		6,172 lb
Maximum cargo-swing load	1,400 kg		3,086 lb
ENGINE			
1 TURBOMECA ARRIEL 2D turboshaft engine			
Takeoff power (at SL-ISA)	632 kW		847 shp
PERFORMANCE AT MAX. GROSS WEIGHT, ISA, SL			
Maximum speed (VNE)	287 km/h		155 kts
Fast cruise speed	251 km/h		136 kts
Range with standard tank	651 km		351 NM
Max Endurance without reserve at 100 km/h - 54 kts	4 h 28 min		
Rate of climb	10 m/s		1,959 ft/min
Service ceiling	5,044 m		16,550 ft
Hover ceiling IGE	4,023 m		13,200 ft
Hover ceiling OGE	3,383 m		11,100 ft
OPERATION LIMITATIONS			
Maximum altitude (PA)	7,010 m		23,000 ft
Minimum temperature	- 40°C		-40°F
Maximum temperature	ISA + 35°C / 95°F, limited to + 50°C / 122°F		

The value of experience

The H125 is a member of Airbus Helicopters' rugged and proven Ecureuil Single family. Some 4,950 Ecureuils Single have been delivered in 110 countries for some 1,600 operators. These aircraft have cumulated more than 23 million hours.

More than 1,400 H125 series are currently in-service worldwide, and are mainly used for high performance missions in "high and hot" conditions.





Contacts

For more information, please contact:
marketing.helicopters@airbus.com



© AIRBUS HELICOPTERS, Aeroport International Marseille Provence - 13725 Marignane Cedex - France - 2015 - All rights reserved, Airbus Helicopters' logo and the names of its products and services are registered trademarks.

Airbus Helicopters reserves the right to make configuration and data changes at any time without notice. The facts and figures contained in this document and expressed in good faith do not constitute any offer or contract with Airbus Helicopters.

Concept design by MicroMega
Photos by ©Mark Mansfield - ©Eric Trésamini - ©Turbomeca. ©Airbus Helicopters / ©Jérôme Deulin - ©Patrick Penna - ©Eric Raz - ©Anthony Pecchi.

Printed in France by Hemisud

Printed on PEFC certified paper originating from sustainable forests.

H125-BR-0516E